

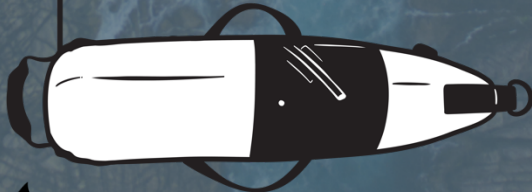


2024

69th AUSTRALIAN SPEARFISHING CHAMPIONSHIPS



DUNSBOROUGH WA



recfishwest



OLD MAN BLUE



MEND MARGARET RIVER

GYOTAKU by DERYCK





Table of Contents

VENUE INFORMATION	3
GENERAL INFORMATION	3
Torches	3
COSTS	4
ACCOMMODATION.....	4
PAIRS FORMAT	4
POSSIBLE DIVE SITES	4
Hamelin Bay	5
Dead Finish – Augusta	6
Canal Rocks	7
Sugarloaf Rock	8
Eagle Bay/Meelup	9
SCHEDULE OF EVENTS.....	10
SCORING SYSTEM	11
PENALTIES.....	11
TITLES AND TROPHIES.....	11
TRUE PAIRS CATEGORIES	12
INDIVIDUAL CATEGORIES.....	12
NOMINATED PAIRS CATEGORIES	13
CATEGORY INFORMATION	13
GUIDELINES FOR TRUE-PAIRS	14
SAFETY NOTICE TO COMPETITORS.....	15
COMPETITION RISK ASSESSMENT & ACTION PLAN	17
ONLINE RESOURCES.....	21
COMPETITON CONTACTS	21
SPECIES LIST	22
Medical and Emergency Contact List	24
Emergency Access to each competition site	25
Medical and Emergency Contact List	25



VENUE INFORMATION

After ten years, the Australian Underwater Federation Spearfishing Nationals are coming back to Western Australia in April 2024. WA Undersea Club and the Spearo’s of WA are thrilled to extend a warm invitation to all passionate divers to join us at the prestigious 69th National Championships, set to take place in the breathtaking coastal town of Dunsborough, Southwest Western Australia.

The south coast’s pristine waters and abundant marine life make it the ideal location for this championship. Nestled along the rugged coastline of the Indian Ocean, the southwest cape boasts clear waters, diverse underwater terrain, and a thriving aquatic ecosystem, providing a challenging yet rewarding site for spearfishing.

With its breathtaking natural beauty and the warm hospitality of the local community, WA’s southwest offers competitors and spectators alike an unforgettable experience both in and out of the water.

The Australian National Spearfishing Championships will be a shore-based pairs competition with a series of exciting categories, that will test your skills, precision, and resilience as a spearo. Whether you’re a seasoned competitor or a newcomer looking to embrace the thrill of spearfishing at a national level, this event promises to be an unforgettable event that celebrates the art and passion of spearfishing while exploring the pristine underwater wonders of Australia's southwestern coast.

GENERAL INFORMATION

In keeping with the AUFs motto of ‘SAFE SUSTAINABLE SELECTIVE SPEARFISHING’ the National Titles will be in a true-pairs format. The system aligns with current ‘best practice’ pairs competitions being held in places like Queensland, Western Australia and New Zealand, along with the Inter-Pacific.

Wind and swell conditions will dictate the terms of where and when we dive. However, the selected competition zones around the southwest cape offer flexibility and good protection from prevailing conditions in the event of unfavourable weather.

The Australian Spearfishing Championships will be conducted from shore at each location and held over 3 days (Heats 1 to 3). Priority will be given to the open spearfishing events, followed by film fishing/swim race.

All competitors must be financial members of the Australian Underwater Federation. Overseas CMAS recognized countries competitors are also welcome and should register without delay.

Torches

Contrary to the A-Section Rules, the AUF Spearfishing committee unanimously voted ‘yes’ to being able to use torches in the 69th Spearfishing Nationals. As there are no local laws (unlike QLD), banning the use of torches while spearfishing in WA. All other A-Section rules will stand as is.



COSTS

Entry fee is \$500 per pair, not including your AUF membership. This does include a catered meal on presentation night, with extra tickets available for friends and family at \$50 each. Registration and extra presentation night tickets are available via the WAUC website. Registration for nominated categories and individual competitions will be offered to all registered divers once registrations close.

Online registration: waunderseaclub.tidyhq.com



ACCOMMODATION

Competitors will be responsible for arranging their own accommodation and it is highly recommended to book accommodation ASAP to secure a booking.

Dunsborough is a popular holiday destination, so there is an array of accommodation such as caravan parks, motels and holiday house rentals. However, it does get busy, so we recommend booking well in advance.

PAIRS FORMAT

For the second year, keeping with the AUFs motto of ‘SAFE SUSTAINABLE SELECTIVE SPEARFISHING’ the National Titles will continue to be held in a True-Pairs format with scoring based on one species per True-Pair per day. The change aligns with current ‘best practice’ pairs competitions being held in places like Queensland, Western Australia and New Zealand, along with the Inter-Pacific.

Scoring will be based on one species per True-Pair per day of competition. You will see from the scoresheet there is a wide variety of eligible species available to competitors.

POSSIBLE DIVE SITES

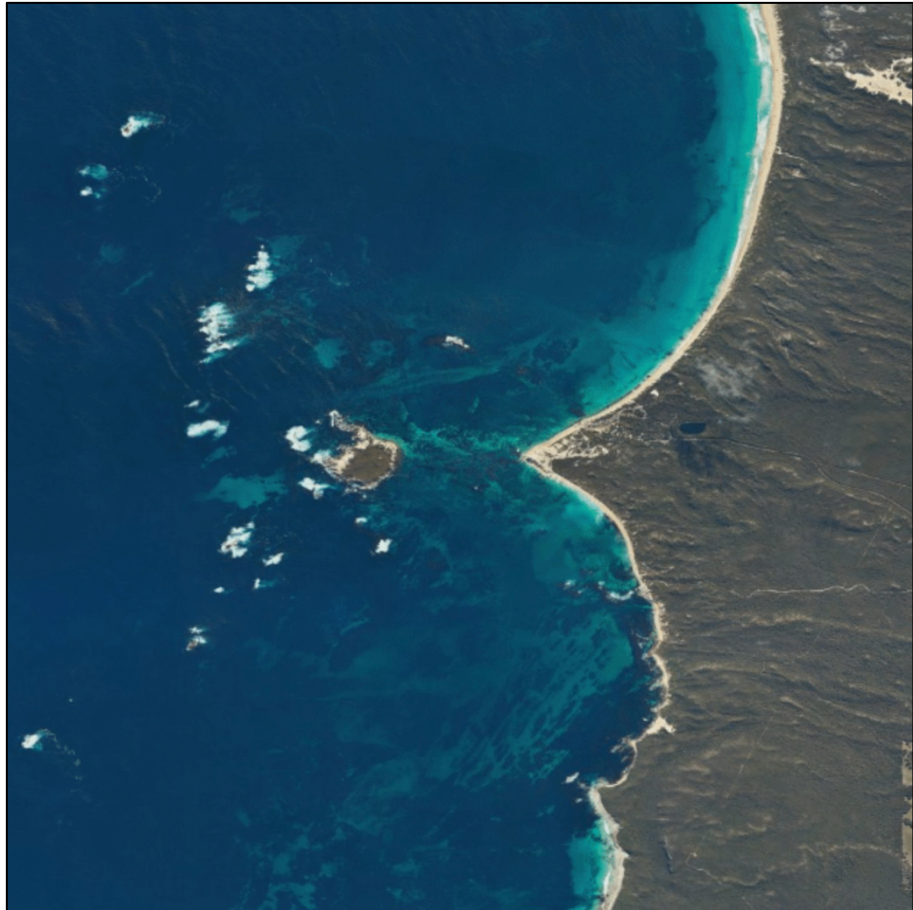
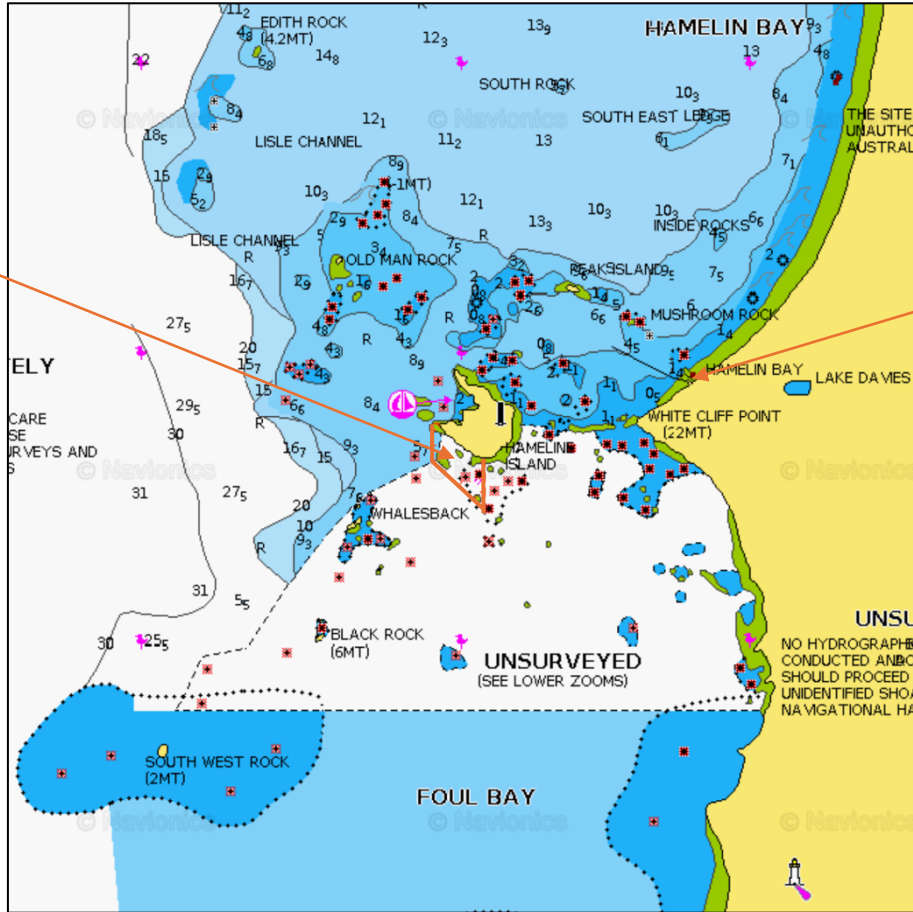
We have selected four potential dive sites and one site for the film fishing & sub junior competition. This fifth site **will not** be used for the Spearfishing championship. Please be aware of the local sanctuary zones that are near all four of the selected zones. The Recfishwest app is the best tool for identifying sanctuary zones around the competition sites. <https://recfishwest.org.au/recfishwest-fishing-rules-app/>



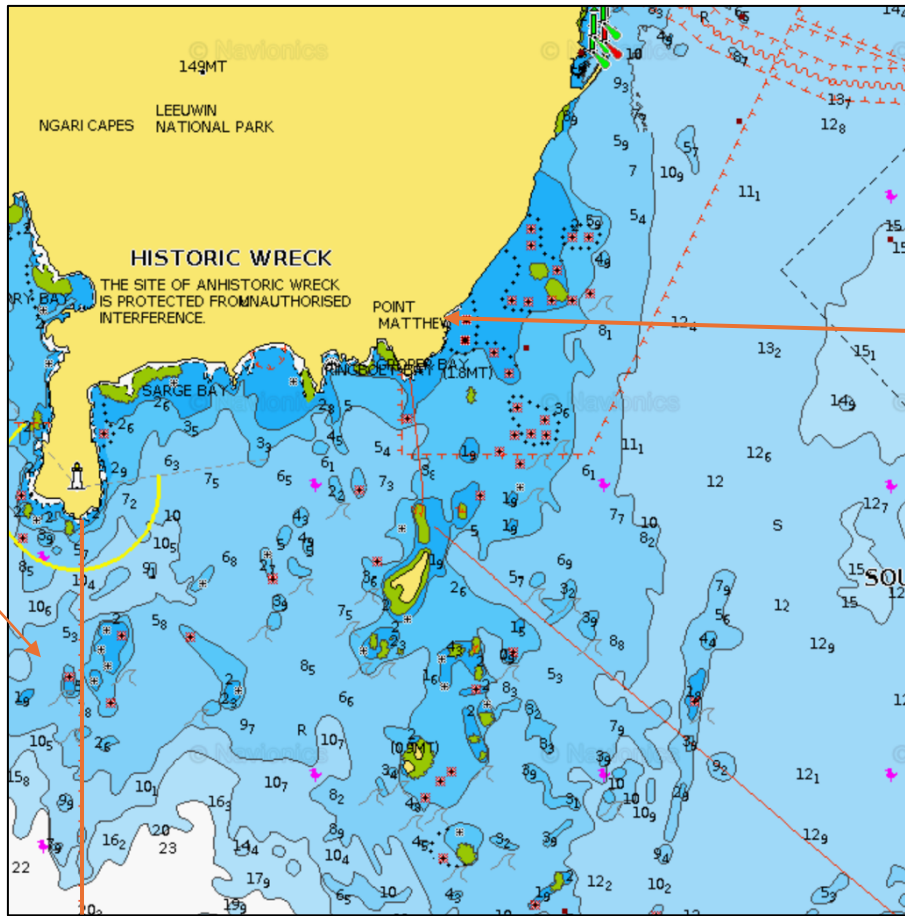
Hamelin Bay

Hamelin Island
MARINE SANCTUARY

Start/Finish Point
Hamelin Bay
Boat Ramp

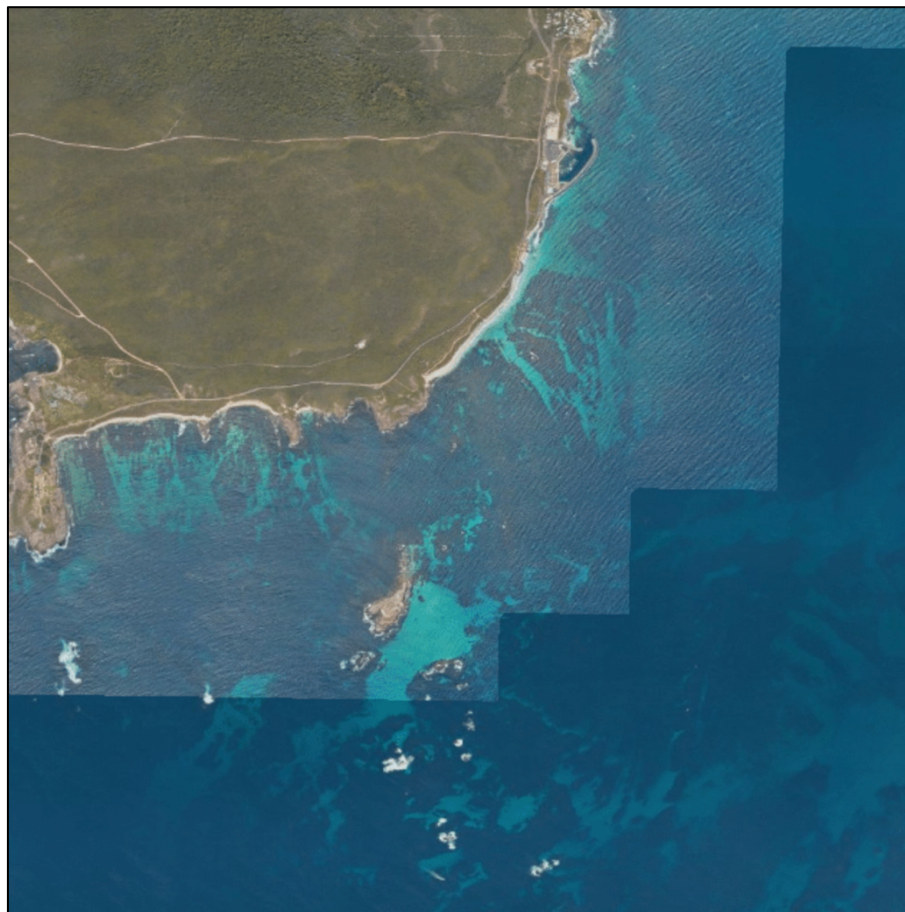


Dead Finish – Augusta

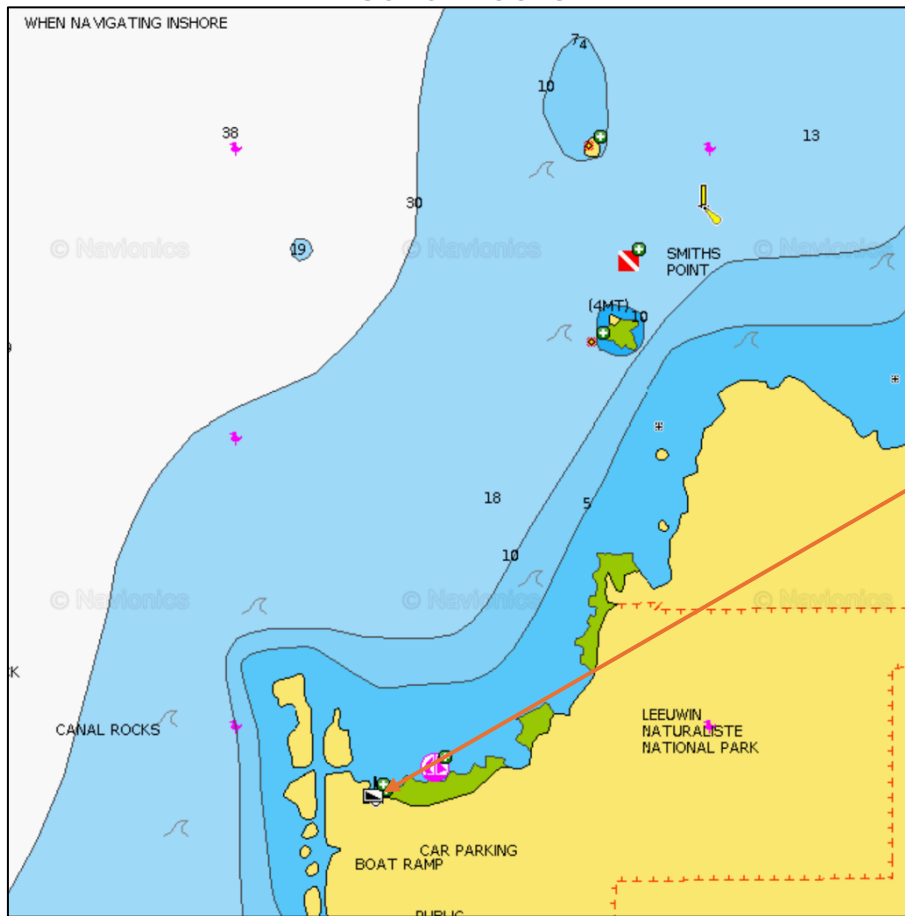


Start/Finish Point
 -34.366190,
 115.159252

Cape Leeuwin
 MARINE SANCTUARY



Canal Rocks

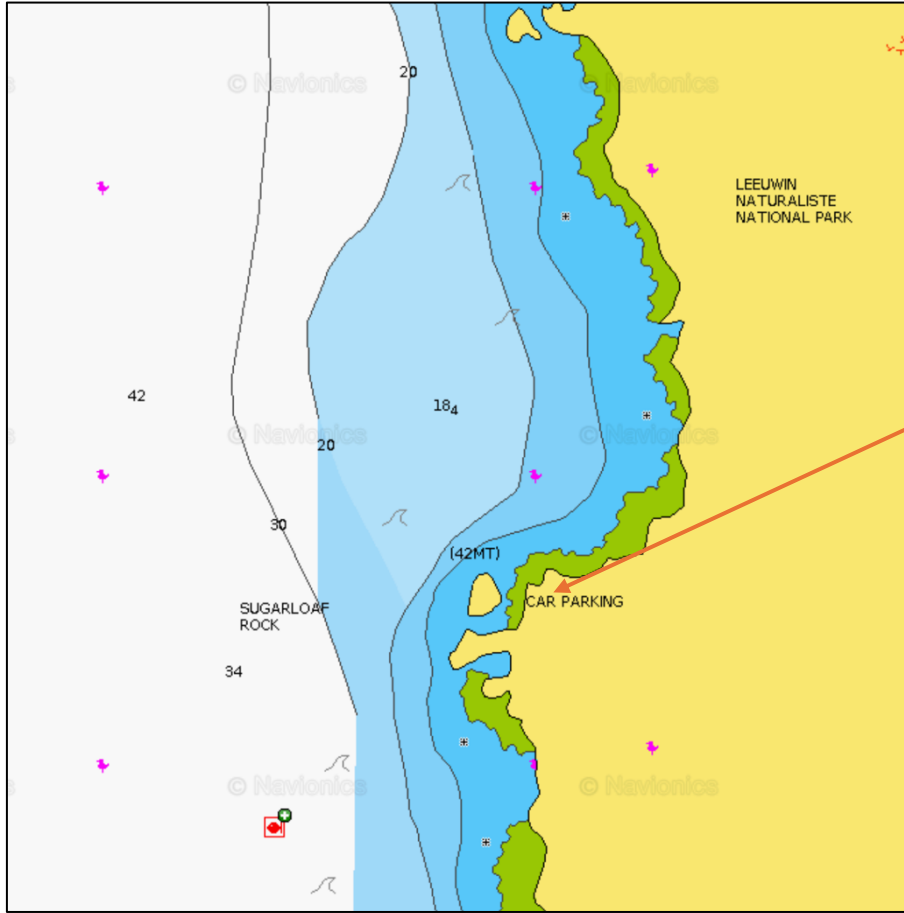


Start/Finish Point
Canal Rocks Boat
Ramp





Sugarloaf Rock

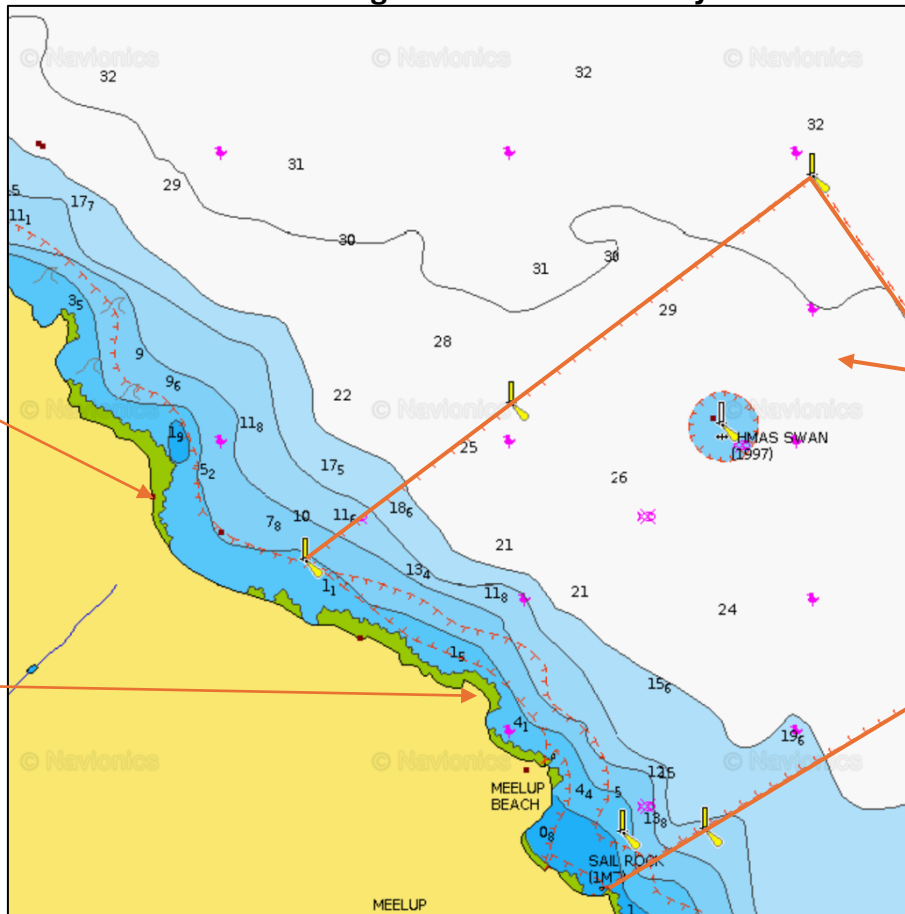


Start/Finish Point
Sugarloaf Rock
Carpark



Eagle Bay/Meelup

Film Fishing & Sub Junior Site Only



Start/Finish Point
for
Sub Junior
Eagle Bay
Boat Ramp

Eagle Bay
MARINE SANCTUARY

Start/Finish Point
for
Film Fishing
Point Picquet
Carpark





SCHEDULE OF EVENTS

PRELIMINARY AGENDA OF EVENTS		
Please note that events or locations may change due to weather and/or other unforeseen events. The location of each day’s event will be advised by 6:00pm the day prior.		
DAY	EVENT	ADDITIONAL INFORMATION
Day 1 Saturday 20th	Registration and Briefing 5 pm meet other competitors and buy your own counter meal / drinks 6 pm competitor and safety briefing	Location: Dunsborough Bay Yacht Club 307 Geographe Bay Road, Dunsborough
Day 2 Sunday 21st	Spearfishing Heat 1: Australian Spearfishing Championships	Each day competitors to meet at the start location at 6:00am for briefing and gear safety inspection. Competition 7:00am – 1:00pm Weigh-in commence 3:00pm
Day 3 Monday 22nd	Spearfishing Heat 2: Australian Spearfishing Championships	As above for Day 2.
Day 4 Tuesday 23rd	Film fishing & swim race Sub-juniors if required Times to be notified.	This day may be changed if the weather has been unfavourable, or the forecast isn’t suitable.
Day 5 Wednesday 24th	Spearfishing Heat 3: Australian Spearfishing Championships	As above for Day 2.
Day 6 Thursday 25th	Spare day to be used in inclement weather only	
Day 7 Friday 26th	Spare day to be used in inclement weather only Presentation Dinner	Presentation dinner from 6pm at Shelter Brewing Co. Busselton , 11 Foreshore Parade Food will be provided; dietary requirements will be captured closer to the event. Family and friends are encouraged to come, extra tickets can be purchased via the website



SCORING SYSTEM

The standard Australian Underwater Federation scoring system will be used, namely 100 points per species, 10 points per kilogram of weight; and max weight of any one fish of 15 kg.

Each pair can weigh in one of each species on the score sheet. Possession limit of 2 demersal fin fish per day applies to each competitor, as well as west-coast individual species bag limits.

No unlisted species will be eligible; only those on the score sheet are eligible (Score sheet attached).

Despite diving in a true pair, each diver will need to weigh in their catch separately to ensure compliance with possession limits as well as working out the scores for nominated pairs.

Any competitor, pair or team who infringes fisheries or marine park limits or regulations will be disqualified from all competitions.

PENALTIES

A 100 point penalty will apply in each instance any competitor's fish presented for weighing is: an ineligible species; under legal length; under minimum weight (with a 10% leeway*); or in excess of the allowable number for that species. Any competitor, pair or team who infringes fisheries or marine park limits or regulations will be disqualified from all competitions.

* Any fish that weighs less than 500g at the time of the official weigh-in will not be scored but a penalty will only be given if that fish weighs under 450g (a 10% leeway).

TITLES AND TROPHIES

The Australian National Spearfishing Titles shall be swum as true-pairs with Titles and Trophies being awarded to categories within **True Pairs Competitions, Nominated Pairs Competitions** and **Individual Competitions**.



TRUE PAIRS CATEGORIES

Category	Requirements
<u>Open Spearfishing Championship</u>	Any gender / Any State combination Gold / Silver / Bronze medals awarded to top three True-Pairs.
<u>Mixed Pairs</u>	A True-Pair consisting of a male and female / All ages / Any State combination
<u>Neptune’s Apprentice</u>	A True-Pair consisting of an adult and Junior / Any gender / Any State combination
<u>State Team Championship</u>	Team Event Top 3 same State pairs All ages / Any gender / Same State combination Nomination not required
<u>Top Team Championship</u>	Team Event Top 2 Pairs All ages / Any gender / Any State combination Nomination Required
<u>Most Species</u>	'Most Species' title is awarded to the True-Pair with the most species caught across all Spearfishing Championships. In the case where more than one fish per species is weighed-in, then those fish shall count as only one for the purposes of this award.

INDIVIDUAL CATEGORIES

Category	Requirement
<u>Sub-Junior</u>	Individual Competition swum with an observer For competitors aged under 15 years Scores taken from the Sub-Junior Spearfishing Championship
<u>Fin-Swimming</u>	Individual Competition
<u>Film-Fishing</u>	Individual Competition (swum in pairs)
<u>Super-Diver</u>	Individual Competition
<u>Most Meritorious Fish</u>	Individual Competition As judged by the Championship Director from fish taken during either the Open or Sub-Junior Spearfishing Championships
<u>Largest Fish</u>	Heaviest fish weighed in during the competition.



CATEGORY INFORMATION

In Nominated Pairs Competitions the pair does not have to swim together (such as in True-Pairs); rather any two competitors in a particular category (ie age / gender) can nominate prior to the commencement of the Open Spearfishing Championship. **Nominations will be captured via an online form once registrations close.**

As regards the scoring of Junior and Women’s Nominated Pairs Competitions: competitors are allowed their own individual fish tally and each Competitor’s individual scores are then added together. As regards all other Nominated Pairs categories 50% of each competitor’s True-Pair score will be combined for their Nominated Pairs score.

In Individual Competitions (except the Fin Swimming), the competitors must swim in a pair or be accompanied by a safety observer.

NOMINATED PAIRS CATEGORIES

Category	Requirements
<u>Grand Master</u>	For competitors aged 64 years and over
<u>Master</u>	For competitors aged 55 to 63 years
<u>Veteran</u>	For competitors aged 45 to 54 years old
<u>Senior</u>	For competitors aged 25-44
<u>Intermediate</u>	For competitors aged 18-24
<u>Junior</u>	For competitors aged 15-17
<u>Women’s</u>	For female competitors aged 15 and over



GUIDELINES FOR TRUE-PAIRS

- AUF True-Pairs events closely follow the rules set down for the Interpacific events.
- True-Pairs are to use the same safety equipment as previously for an individual event (Compliant Float | Whistle and signalling mirror | Orange plastic safety sheet | Sheathed diver’s knife | Weight belt fitted with quick release buckle | cover to spear points | see the “A-Section Rules”).
- Two divers of similar capability team up and nominate to compete together as a True-Pair.
- The divers may have one gun each and spare guns unloaded and stored horizontally on a Compliant Float.
- Both divers must maintain & execute ‘**one up-one down**’ diving practice. This means:
 - watching your buddy dive down, and return safely to the surface;
 - make eye contact after a dive - a blackout can occur up to 15 seconds after ascent; and
 - if you are diving with someone not as adept as you are, stay within their comfortable limits, not yours.
 - Disqualification will ensue if both competitors are submerged at the same time and not maintaining ‘**one up-one down**’ practice
- The True-Pair tows one Compliant Float with the following set up:
 - Either rig-line may be bungee or part bungee;
 - One diver attaches the long line to his gun or person and is allowed to dive and spearfish;
 - The other diver holds onto the short line, remains on the surface and tows the float;
 - Divers alternate between the short and long rig lines between dives;
 - Both divers must always remain within 30 metres of the float whilst on the surface.
- Whilst the spearing diver is submerged the surface diver must always do his best to stay above the submerged diver and be aware of their position at all times.
- Both divers are not allowed to be submerged below the surface at the same time. Penalty is disqualification.
- The two divers can swap duties of spearing or towing to suit themselves.
- The diver on the surface must not dive, let go of the rig-line or endanger the submerged diver in any way.
- It’s not mandatory, but recommended, that the Compliant Float also be equipped with a coiled 50mtr light line and small drop weight in case the surface diver feels the need to immediately search and possibly dive to locate the submerged diver. If deployed, it would anchor the float in the proximity of the potential search area as a reference point.
- The True-Pair are only allowed to weigh-in one of each specie on the scoresheet per day of competition. Exceptions apply for Women’s and Junior Nominated Pairs.
- It’s also recommended that the pair work in depths and conditions where, either one could rescue the other in an emergency situation.
- These guidelines also apply when training / scouting for an event. Scuba, Hooker or similar may not be used when scouting.



SAFETY NOTICE TO COMPETITORS

In the interest of a safe and incident free competition we all need to take responsibility. The organisers have taken reasonable measures to ensure this is possible. Please ensure you fulfill your responsibility to take care of your own and fellow competitors' safety.

Here is relevant information on safety during the event and some tips to help each competitor remember their role in helping make this happen.

- Each safety boat has a first aid kit with the operator on board. One safety boat will be equipped with defibrillator and oxygen resus.
- Each safety boat is equipped with communication to the other safety boat, as well as shore base, and emergency services.
- A competitor may only approach, touch or hold onto a safety boat under instruction from the crew.
- Each safety boat has emergency water on board, however this is only for emergency use. Competitors are strongly encouraged to carry sufficient water on their personal float for hydration as assistance from a safety boat for any reason (except for emergency / safety at the discretion of the safety boat operator) will result in disqualification from the days event.
- A competitor may enter a safety boat or seek assistance from a safety boat at any time but doing so, for any reason (except for emergency / safety reasons sanctioned at the discretion of the safety boat operator) disqualifies that competitor, and their pair, from that day's competition. Where sanctioned assistance is given divers cannot gain any advantage from assistance from a safety boat over other competitors.
- If you suffer a cut, ensure you stop the bleeding and seek assistance if necessary.
- Full length wetsuits with hoods are recommended due to risk from: stinging jellyfish, cuts and abrasions and sun exposure.
- Divers are strongly encouraged to wait until they have swum clear of other divers before loading their speargun.
- Ensure you have the safety equipment as set out in the “A Section Rules” as a minimum.
- Use a float capable of carrying your fish out of the water or enclosed.
- If a competitor's flag is laying in the water during the competition the safety boat crews will ask the competitor to right it. The flag must be upright and visible as much as possible allowing for weather conditions. Floats and dive flags must be clearly visible to boat traffic at all times, to ensure the safety of the diver.
- If the flag continues to lie down in the water and not remain upright, safety boat crew are permitted to examine the float setup to check for problems and record the diver number, it will then be reported to the Championship Director. Divers must co- operate with safety boat instructions at all times.
- One of the biggest risks to a competitor in the water is collision with a craft / boat.

SAFETY NOTICE TO COMPETITORS

- The more visible you are the less likely this is to happen. Put your head up often and look about for boat traffic. If surfacing and hearing a boat raise your gun above your head as you ascend.
- The safety boats will aim to redirect/inform approaching watercraft of the large amount of divers present whenever possible.
- Ocean currents create a risk of being swept out to sea, it can happen, and has happened in high level competition so please be vigilant. Always be aware and stop, look, and monitor what the current is doing.
- If you become aware of a strong rip or dangerous current, please notify the safety boat crew so they may warn other competitors.
- In case of exceptionally high risk (for example a large predatory shark or dangerous weather change) the safety boat crews have the authority to remove competitors from the water. In this case the competition will cease for the day and no results will be recorded.
- To draw attention from one of the safety boats you may:
 - Raise your gun in the air if it is not an urgent situation
 - In a non-urgent situation, both competitors must be visible on the surface for safety boats to enter their proximity
 - In an urgent situation
 - Wave your gun in the air, covered with an orange plastic safety sheet
 - Blow your whistle and use your signalling mirror
- If an airhorn is heard from the safety boats, stay on the surface and receive any messages from safety boats
- Rocks close to the shoreline / reef can be covered in weed which is extremely slippery.
- Care must be taken when exiting the water onto rocks.
- Whenever a competitor is out of the water, tips of guns must be covered, or spearhead removed.
- Aim to eat healthily and avoid excessive alcohol consumption during the week of competition. Energy levels and hydration are key elements to personal performance and safety during such physically demanding competitions.
- Wherever possible try to remain in sight of another person or float so you may attract attention for assistance. Raise your head often and think about the movements and safety of yourself and other competitors.
- Lastly, please remember that all committee members and helpers are volunteers.
- Organisation and planning for this competition has taken the majority of the past year. Please treat all volunteers, helpers and organisers with respect. Constructive comments are welcome, however inappropriate or abusive language/attitude is not.
- Competitors should familiarize themselves with the Spearsafe website



spearsafe.com.au



COMPETITION RISK ASSESSMENT & ACTION PLAN

Note to competitors: A competitor may enter a safety boat or seek assistance from a safety boat at any time but doing so, for any reason, disqualifies that competitor, and their pair, from that day’s competition.

Risk	Cause	Avoidance Measures	Primary Response	Support Required	Secondary Response
Diver blackout or drowning, when diver is close to the surface	diving too deep/long Insufficient recovery time before dive Medical Event Alcohol/drugs	Agree to limited depth/dive times with your buddy Limit dive depths and times to within your known ability, having regard to your physical state Warn your buddy if you expect a dive to be difficult so they can be ready to provide support Buddy should monitor every dive and be close enough to assist immediately if diver blacks out Avoid alcohol/drugs prior to and during event	Recover diver, remove mask, blow gently on face, mouth to mouth if not conscious after short time. Raise alert by waving gun covered with orange plastic safety sheet / blow whistle to attract safety boat – get someone else to do this if possible	Medic on safety boat, trained for SWB incidents Equipped with O2	Diver blackout protocol
Diver lost underwater	Blackout or entanglement / entrapment	Carry knife, avoid entanglement risks Do not dive until your buddy has dealt with any speared fish and is ready to watch your dive Buddy should monitor every dive and be ready to assist if you do not surface when expected Surface diver should monitor float line for direction of diver	Follow float line and search immediately for diver. If not found immediately, enlist surrounding divers. Mark location if possible: consider firing gun into bottom as marker, take note of where you are Maintain a conservative and safe diving pattern to ensure you also do not blackout Recover diver only if safe to do so. Remove weight belt if necessary and bring diver to surface lifting under chin to hold their mouth shut. Proceed immediately with mouth to mouth Raise alert by waving gun covered with orange plastic safety sheet / blow whistle to attract safety boat	Safety boat must have a SCUBA diver and SCUBA gear for diver/body recovery	Medic to assess diver for appropriate response



COMPETITION RISK ASSESSMENT & ACTION PLAN

cont.

Diver DCS	Diving too / deep too long / not enough recovery time before dive	Avoidance measures Buddy control, self control Do not do weight assisted descents	Raise alert by waving gun covered with orange plastic safety sheet / blow whistle to attract safety boat – get someone else to do this if possible	Medic on safety boat, supply O2	Request rescue helicopter to evacuate diver to nearest decompression chamber.
Lung or Trachea Squeeze	Straining/flexing arms, body, or neck at depth damages lung or trachea. Diver will cough up blood	Limit dives to depths you are comfortable at, and avoid twisting body, extending chin	Raise alert by waving gun covered with orange plastic safety sheet / blow whistle Alert safety boat, stop diving	Medic on safety boat to evaluate	Consult doctor and specialist as ordered
Diver run over by boat including safety boat	Diver not visible Boat driver not aware or not paying attention Diving in high traffic area Sun strike	Boat must not manoeuvre around a pair of divers unless both are visible on the surface 5 knot rule Communicate with surface diver before coming within 50 metres of any divers Safety boat drivers to be vigilant	Apply pressure to wound, keep head out of water Raise alert by waving gun covered with orange plastic safety sheet / blow whistle to attract safety boat Recover to boat	Medic on safety boat equipped with first aid kit	Transport to hospital if required
Boat strike (unknown boat)	Lack of visibility Boat driver not obeying 5 knot rule Sun strike Boat driver unaware	All floats/plats must carry flags, min 15x20 cm Safety boat with dive flag to patrol other boats and warn of diver presence Notify boating public by VHF/media communications Divers to avoid diving in high boat traffic areas, or at least remain aware when crossing such areas Raise gun/wave to alert oncoming boats	Try to get boat to stop and take you to safety boat. Raise alert by waving gun covered with orange plastic safety sheet / blow whistle to attract safety boat. Apply pressure to wound, keep head out of water.	Medic on safety boat equipped with first aid kit	Transport to hospital if required



COMPETITION RISK ASSESSMENT & ACTION PLAN

cont.

Diver puncture wound	Spear wound Cuts from knives/fish Falls/head knock General Sickness/minor injury Fish spines	Self-management Never point a loaded gun at another person Unload gun before exiting water Care when cutting fish Tip protectors on spearguns when out of water Never hang extra spears or guns from float pointing downwards, or loaded	Raise alert by waving gun covered with orange plastic safety sheet / blow whistle to attract safety boat. Apply pressure to wound, keep head out of water.	Medic on safety boat equipped with fist aid kit	Transport to hospital if required
Diver lost in current	Unable to swim against current in high current areas	Monitor strength of current with return swim in mind	Raise alert by waving gun covered with orange plastic safety sheet / blow whistle to attract safety boat. Swim across current to get out of it Conserve energy, stay together, use float/plat for support. Fire gun into reef or tie rig line onto reef and hang onto float / plat. Safety boat to search	If not found in short time. Contact Coastguard broader search for	Transport to hospital if required
Shark bite	Using fish for burley	Move away from others using burley when sharks arrive Be wary when retrieving fish with known shark presence. Safety diver to hold guard. Get fish out of the water and into a float / plat as soon as possible.	Raise alert by waving gun covered with orange plastic safety sheet / blow whistle to attract safety boat. Apply pressure to wound, keep head out of water.	Medic on safety boat equipped with first aid kit	Transport to hospital if required
General sickness /nonurgent injury (not in competition)	Any		Contact local doctor	Transport to doctor	Transport to hospital if required



COMPETITION RISK ASSESSMENT & ACTION PLAN

cont.

Dehydration	Forgot to bring a drink with you	Attach water bottle to float	Summon safety boat with raised gun when you see it.	There will be water on the safety boat	If severe dehydration, remain on safety boat until Medic says OK to dive
Hunger	Forgot to bring food for the day	Bring food in your plat or have food on your boat and return during the day to eat it	Summon safety boat with raised gun when you see it. Beg for food.	Safety boat driver's lunch	Remember to bring food next time
Exhaustion	Caught in currents or rough water Not enough food/drink	Assess currents and rough water as you enter them and do not swim too far	Rest on shore if safe to do so in sea conditions Have food/drink Summon safety boat with raised gun when you see it. Conserve energy and hold on to float, stay with buddy	Rest on safety boat	Bring adequate food and water; perform within your limits.
Medical event due to existing health issues	Various	Self-assessment of risks Disclose pre-existing risks to organisers in registration form Have own medication on hand or on safety boat if required	Get to safety boat for Medic support Raise alert by waving gun covered with orange plastic safety sheet / blow whistle to attract safety boat.	Medic on safety boat to assess	Further medical assistance
Boat breakdown/sinking	Various	Maintenance Care when anchoring	Request a tow back	Have VHF onboard Boats travel in groups competition area Tail end Charlie to	Re-allocate divers to other boats



ONLINE RESOURCES

Fishing Rules

[Fisheries WA - Recreational Fishing Guide](#)
[Recfishwest Mobile App](#)

Fish ID

[Fish Identification Guide - Fisheries WA](#)
<https://fishesofaustralia.net.au/>
[Recfishwest Mobile App](#)

Weather

http://www.bom.gov.au/australia/meteye/?loc=WA_MW016
<http://www.bom.gov.au/wa/forecasts/leeuwin-coast.shtml>
<http://www.bom.gov.au/wa/forecasts/bunbury-geographe-coast.shtml>

COMPETITON CONTACTS

Championship Director – Arnold Piccoli | 0417 096 275 | arnie.picc@gmail.com
Organising Committee – Ben Rupnik | 0457 028 542 | benrupnik@gmail.com
Organising Committee – Shane Robertson | competitions@waundersea.com



SPECIES LIST

Each pair can only weigh **1** of any individual species per competition day.
WA Recreational fishing size limits and combined bag limits must be adhered to.
Additionally, for species with no recreational size limit, a supplemental minimum size has been added (in brackets).
An AUF standard minimum weight of 500g for all fish weighed applies, as per the A-Section rules.
Numbers in **RED** are the film-fishing scores for each species.

Demersal Scalefish

TOTAL mixed species daily bag limit per fisher **2** / per pair **4**

Baldchin groper (400mm) 4	<i>Choerodon rubescens</i>	Longsnout Boarfish (300mm) 3	<i>Pentaceropsis recurvirostris</i>
Blue morwong (410mm) 3	<i>Nemadactylus valenciennesi</i>	John Dory (300mm) 5	<i>Zeus faber</i>
Breaksea cod (300mm) 2	<i>Epinephelides armatus</i>	Spangled Emperor (410mm) 5	<i>Lethrinus nebulosus</i>
Leopard Wirrah (300mm) 2	<i>Acanthistius pardalotus</i>	Redthroat Emperor (280mm) 5	<i>Lethrinus miniatus</i>
Western Wirrah (300mm) 2	<i>Acanthistius serratus</i>	Foxfish (300mm) 2	<i>Bodianus frenchii</i>
Harlequin fish (300mm) 2	<i>Othos dentex</i>	Western Pigfish (300mm) 5	<i>Bodianus vulpinus</i>
Dhufish (500mm) 2	<i>Glaucosoma hebraicum</i>	Bight redfish (300mm) 5	<i>Centroberyx gerrardi</i>
Giant Boarfish (300mm) 4	<i>Paristiopterus labiosus</i>	Swallowtail (300mm) 3	<i>Centroberyx lineatus</i>
Short Boarfish (200mm) 5	<i>Parazanclistius hutchinsi</i>	Snapper (500mm) 3	<i>Chrysophrys auratus</i>
Yellowspotted Boarfish (300mm) 3	<i>Paristiopterus gallipavo</i>		

Large Pelagic Finfish

TOTAL mixed species daily bag limit per fisher **3** / per pair **6**

Amberjack (600mm) 4	<i>Seriola dumerili</i>	Trevally, golden (300mm) 5	<i>Gnathanodon speciosus</i>
Samsonfish (600mm) 2	<i>Seriola hippos</i>	Southern Bluefin Tuna (300mm) 5	<i>Thunnus maccoyii</i>
Yellowtail kingfish (600mm) 3	<i>Seriola lalandi</i>	Yellowfin Tuna (300mm) 5	<i>Thunnus albacares</i>
Mackerel, shark (500mm) 4	<i>Grammatorcynus bicarinatus</i>	Albacore Tuna (300mm) 5	<i>Thunnus alalunga</i>
Mackerel, Spanish (900mm) 4	<i>Scomberomorus commerson</i>	Wahoo (900mm) 5	<i>Acanthocybium solandri</i>



Nearshore/Estuarine Finfish			
TOTAL mixed species daily bag limit per fisher 16			
Tarwhine (250mm) 1	<i>Rhabdosargus sarba</i>	Mulloway (500mm) 5	<i>Argyrosomus japonicas</i>
Bream, Yellowfin (300mm) 4	<i>Acanthopagrus morrisoni</i>	Pike, longfin (300mm) 2	<i>Dinolestes lewini</i>
Bonito (300mm) 4	<i>Sarda orientalis</i>	Snook (300mm) 3	<i>Sphyraena novaehollandiae</i>
Estuary cobbler (430mm) 2	<i>Cnidoglanis macrocephalus</i>	Tailor (300mm) 4	<i>Pomatomus saltatrix</i>
Longhead Flathead (300mm) 3	<i>Leviprora inops</i>	Skipjack Trevally (250mm) 1	<i>Pseudocaranx wrighti</i>
Black Reef Leatherjacket (250mm) 2	<i>Eubalichthys bucephalus</i>	Silver Trevally (250mm) 3	<i>Pseudocaranx georgianus</i>
Rock Flathead (300mm) 3	<i>Platycephalus laevigatus</i>	Western Australian salmon (300mm) 2	<i>Arripis truttaceus</i>
Bluespotted Flathead (300mm) 3	<i>Platycephalus speculator</i>	Whiting, King George (280mm) 2	<i>Sillaginodes punctata</i>
Sixspine Leatherjacket (250mm) 2	<i>Meuschenia freycineti</i>	Bluebarred Parrotfish (300mm) 4	<i>Scarus ghobban</i>
Mosaic Leatherjacket (250mm) 2	<i>Eubalichthys mosaicus</i>	Sweetlip, Gold Spotted (300mm) 3	<i>Plectorhinchus flavomaculatus</i>
Horseshoe Leatherjacket (250mm) 2	<i>Meuschenia hippocrepis</i>	Sea sweep (300mm) 1	<i>Scorpis aequipinnis</i>
All Other Species			
TOTAL mixed species daily bag limit per fisher 30			
Western Rock Blackfish (300mm) 4	<i>Girella Tephthaeops</i>	Largetooth Beardie (250mm) 4	<i>Lotella rhacina</i>
Blacksaddle Goatfish (250mm) 3	<i>Parupeneus spilurus</i>	Moonlighter (300mm) 1	<i>Tilodon sexfasciatus</i>
Bluespotted Goatfish (250mm) 2	<i>Upeneichthys vlamingii</i>	Sand Bass (300mm) 4	<i>Psammoperca datnioides</i>
Sea Mullet (250mm) 2	<i>Mugil cephalus</i>	Red Scorpionfish, Western (250mm) 3	<i>Scorpaena sumptuosa</i>
Silver Spot (250mm) 3	<i>Chironemus maculosus</i>		
Ineligible Species			
All protected & unlisted species, including but not limited to: sharks, rays and crustaceans; all molluscs and shellfish; squids, octopus, cuttlefish; pipefish, flutefish and trumpetfish; marine mammals; all toad fishes; protected species; catfish and frogfish; and any other fish ineligible under “B Section Rules” as follows:			
Western Blue Grouper	<i>Achoerodus gouldii</i>		



Medical and Emergency Contact List

Is someone seriously injured or in need of emergency medical help? Do you want Police, Fire or Ambulance?

Call triple zero (000)

Important – if there is no mobile coverage, emergency services will not be contactable via telephone.

In a marine based emergency, use VHF Channel 16

Channel 16 is monitored by VMR, WA Water Police and other WA emergency services.

First Contact	
St John Ambulance	000
Police	000
Marine Rescue	VMR Margaret River - 0455 306 285
Safety Boats and Competition Director	VHF Channel 16 for an emergency
Water Police	9442 8600
Secondary Contact	
Safety Boats and Competition Director	VHF Channel 70 for non-emergency communication
Medical/ GP practises	Margaret River Medical Centre- 9757 2733 Augusta Medical Centre - 9758 1226 Dunsborough Medical Centre – 9746 3300
ED Hospital	Margaret River Hospital - 9757 0400 Busselton Health Campus – 9753 6000 Augusta Hospital – 9758 3222
Nearest Decompression Chamber	Fiona Stanley Hospital (Perth)
Pharmacy	777 Pharmacy - Margaret River 97573688 (8am-8pm Everyday) Dunsborough Pharmacy, Centre Point Shopping Centre, Dunsborough 9755 3272 (8am-6pm Everyday)



Medical and Emergency Contact List

Emergency Access to each competition site	
Sugarloaf Rock	
Ambulance Access	Sugarloaf Carpark, Cape to Cape track Access
Chopper Access	Will be arranged by 000 operator
Nearest Boat Ramp/Access Point	Canal rocks boat ramp
Canal Rocks	
Ambulance Access	Canal rocks carpark/ boat ramp
Chopper Access	Will be arranged by 000 operator
Nearest Boat Ramp/Access Point	Canal Rocks Boat Ramp
Hamelin Bay	
Ambulance Access	Hamelin Bay boat ramp (Hamelin holiday park)
Chopper Access	Will be arranged by 000 operator
Nearest Boat Ramp/Access Point	Hamelin Bay Boat Ramp
Dead Finish/Augusta	
Ambulance Access	Augusta Marina Boat Harbour
Chopper Access	Will be arranged by 000 operator
Nearest Boat Ramp/Access Point	Augusta Marina Boat harbour

Medical and Emergency Contact List

BEN Signs

Beach Emergency Signs- verbalised to 000 in phone call to give Ambulance / Emergency Services a GPS coordinate to the location. Ensure a bystander stays at the BEN signs to direct services into the location and any subsequent crews that may arrive.

